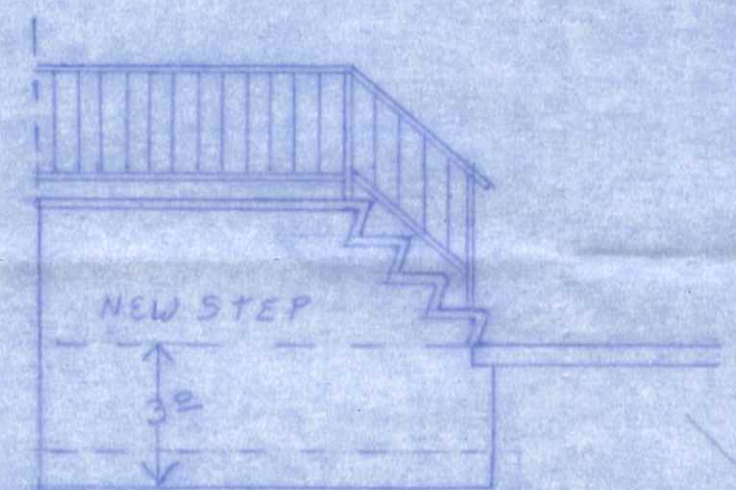


EXISTING DRIVE

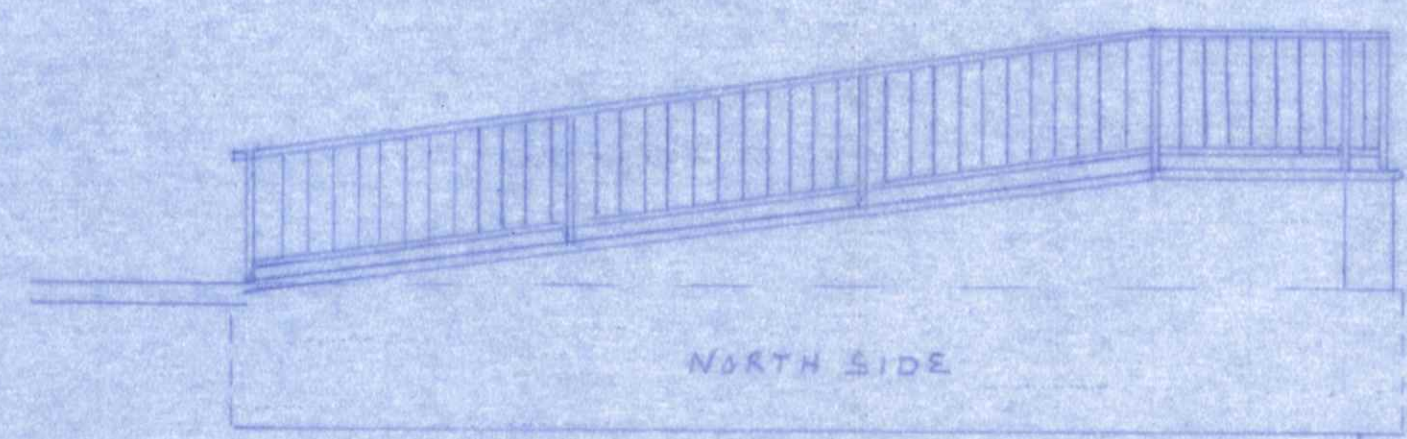
NEW WALK



WEST FRONT



NEW STEP



NORTH SIDE

SCALE 1/4" = 1'-0"

830 N. Scott

RAMP AND FRONT
ENTRANCE REMODEL
FOR WESCHE/SNYDER
FUNERAL HOME
NAPOLEON, OHIO